

# Is AI going to take my job?

## The Real-World Impact of AI, Machine Learning, and Automation in Healthcare

## Robert Negosian, MBA

President, CTO of U.S. HealthTek

- 25 years in the healthcare industry
- Has worked in both Information Technology and Operations sectors
- Has found solutions for prominent world-leading labs, hospitals, physician offices, and revenue-cycle organizations



# Understanding AI

- What does AI mean for our industry?
- What is needed for a successful real-world application?
- What do functioning AI models look like?



## **Greg Sorensen, M.D.**

**CEO, Co-Founder of DeepHealth, Inc.**

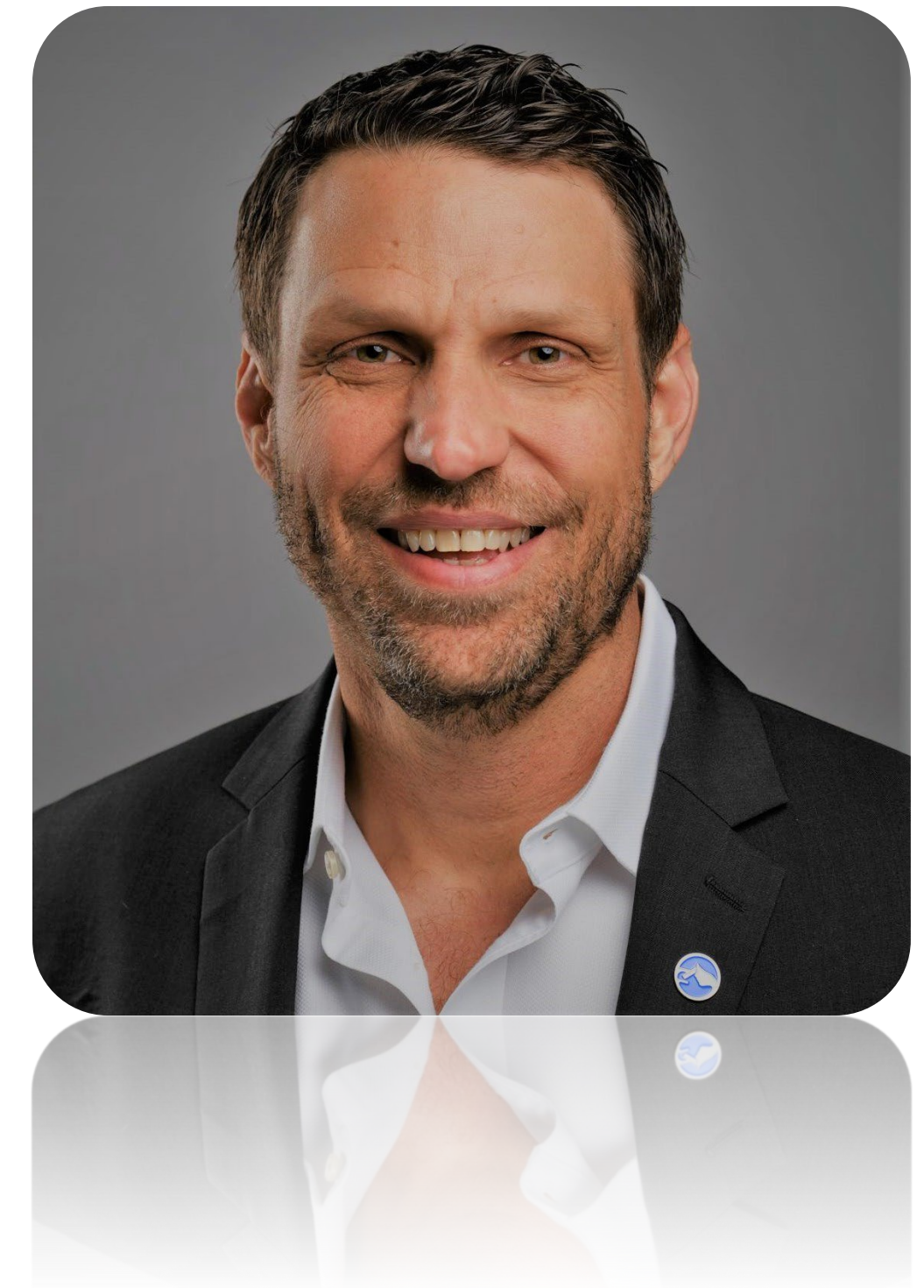
- DeepHealth is a leading AI-powered health informatics provider, now part of RadNet
- One of the first financially sustainable models deploying clinical AI
- Senior executive who has served on the boards of Fresenius Medical Care and Siemens Healthineers



## Andy Moye, Ph.D.

### CEO of Paige AI Cancer Diagnostics

- Has worked across the molecular diagnostics, biotechnology, and life science industries
- Has worked to transform cancer diagnostics through the power of tissue-based AI
- Previously has served at Philips, McKesson, Caris Life Sciences, and WaferGen Bio-systems



# AI Features/Solutions Challenges

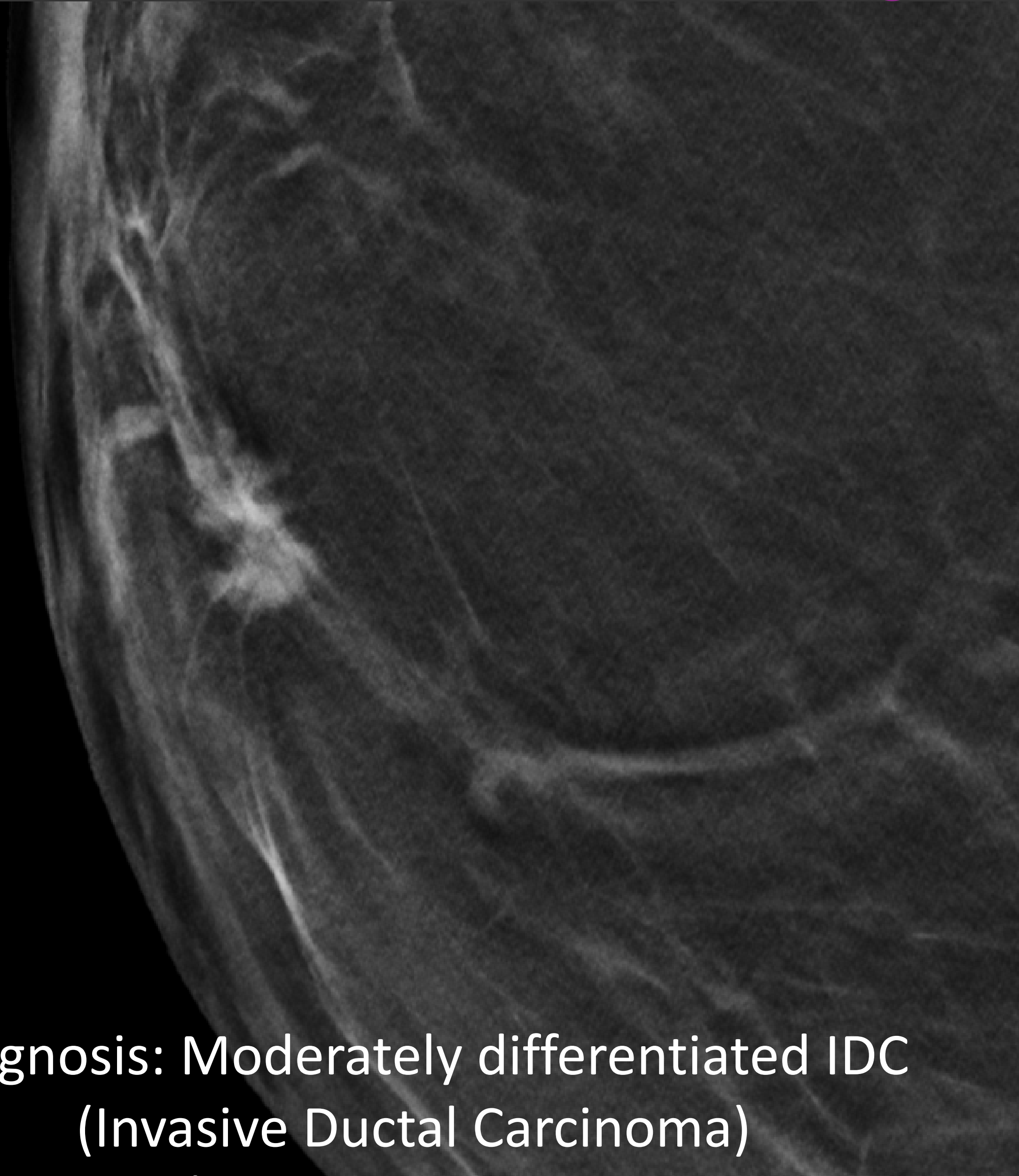
- Streamlining life cycles efficiently
- Overcoming numerous barriers
- Lack of tools, knowledge, ability to leverage

Question:

What are some of the specific AI features/solutions adoptable to our industry?



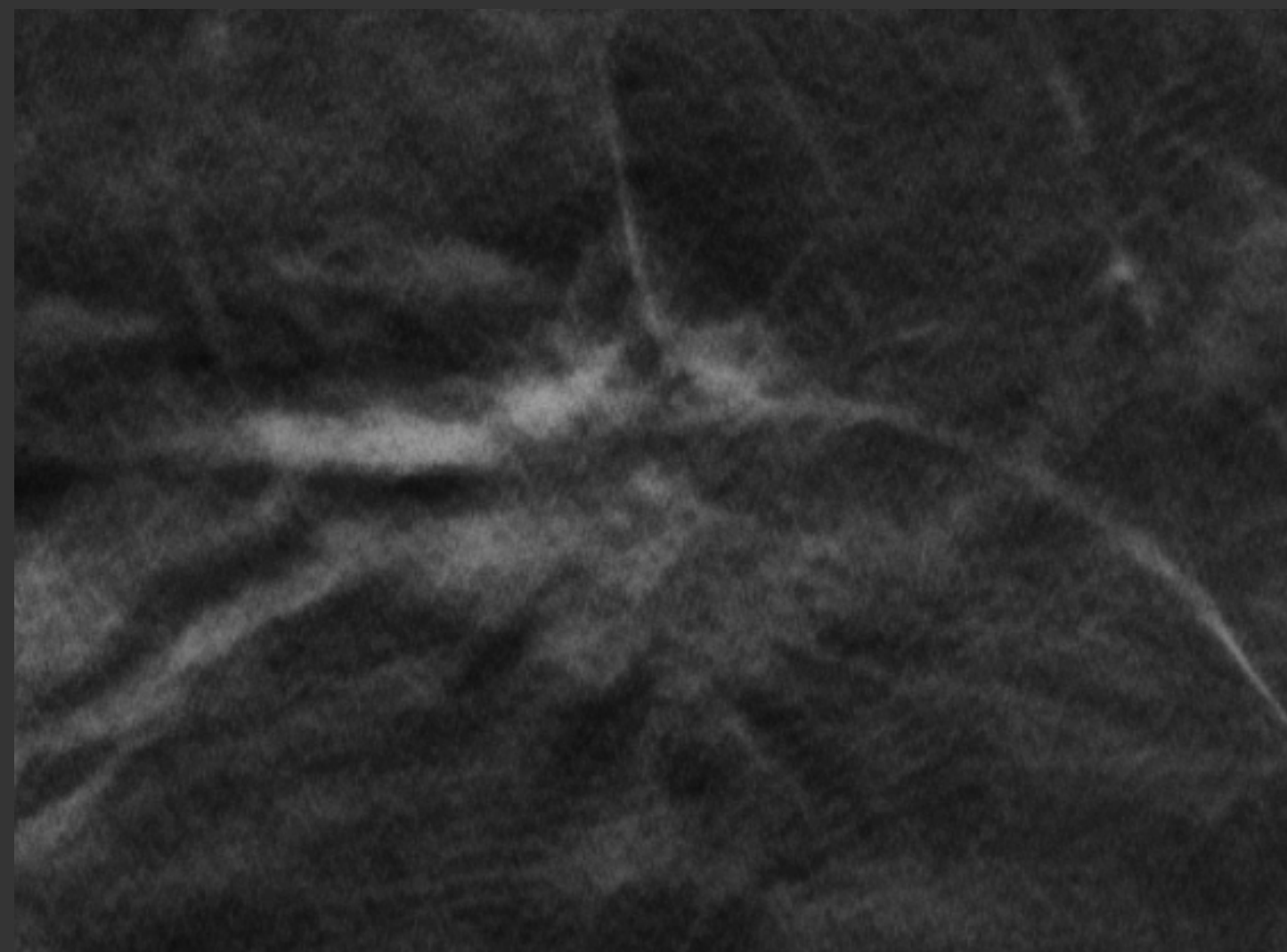
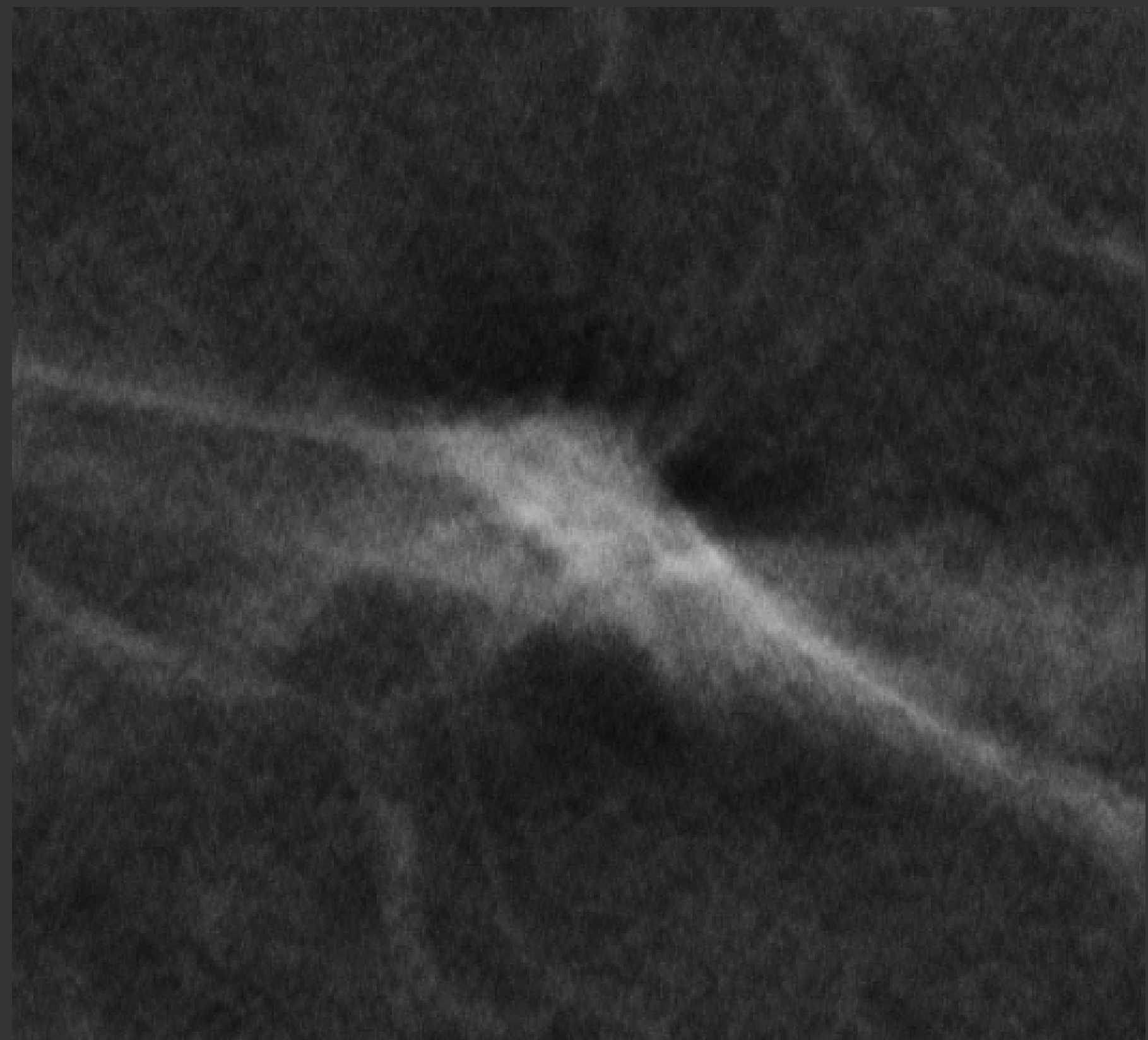
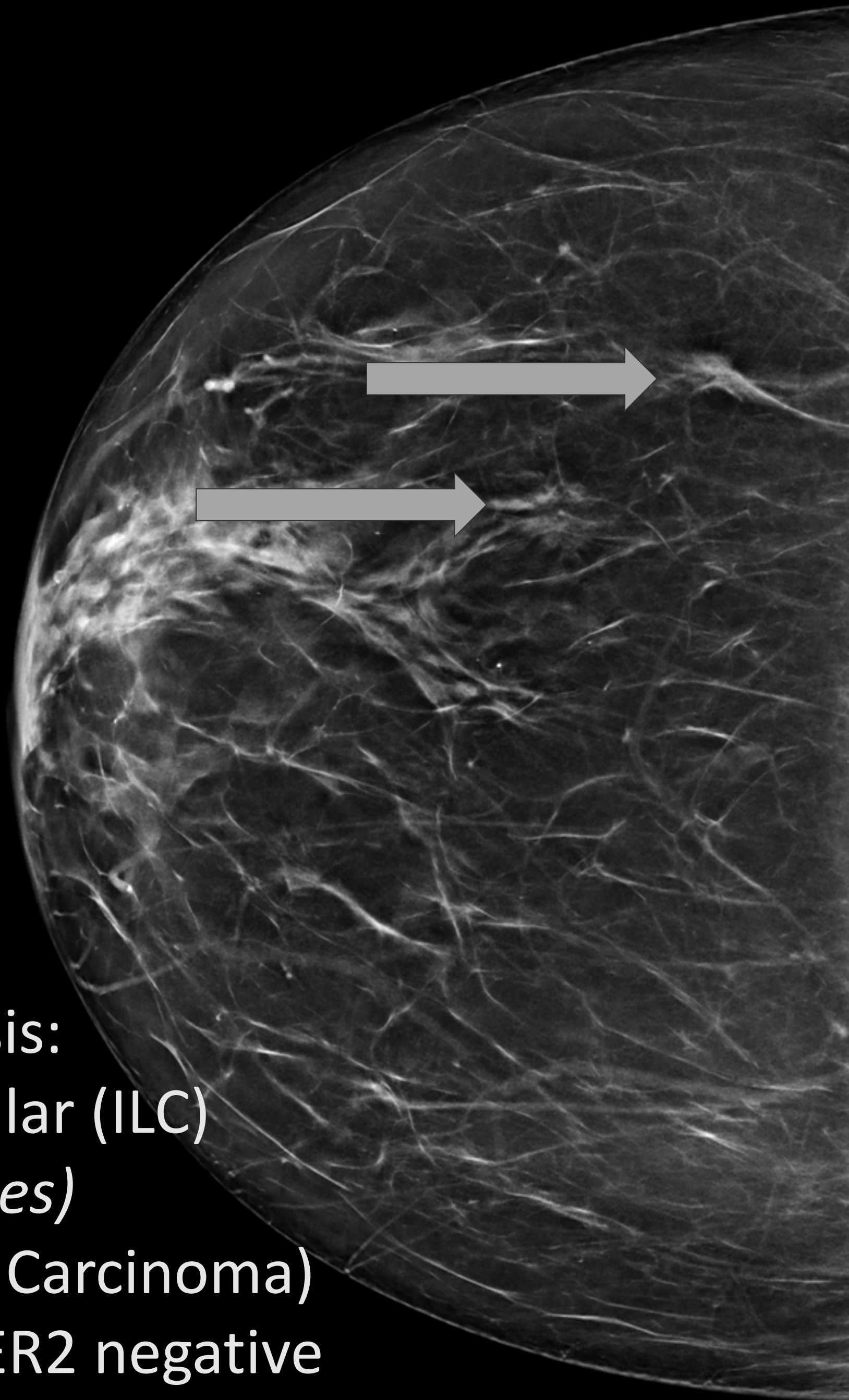
# 70-Year-Old for Screening Mammogram



Diagnosis: Moderately differentiated IDC  
(Invasive Ductal Carcinoma)



[L  
S] RCC



Diagnosis:  
Invasive Lobular (ILC)  
*(both sites)*

(Invasive Lobular Carcinoma)  
ER/PR positive HER2 negative



# AI-Driven Safeguard Review

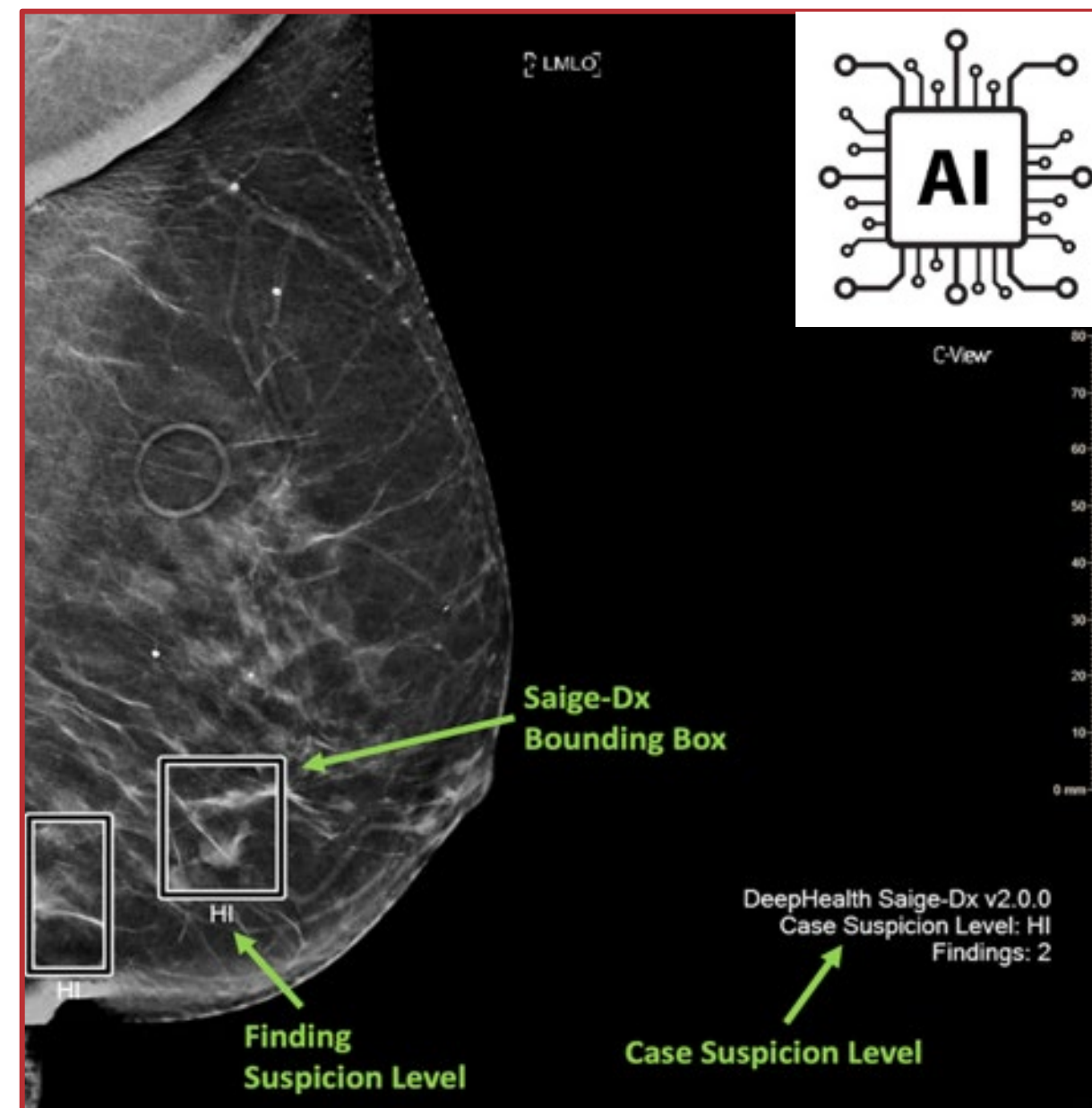
- Targeted review allows further scrutiny.
- Saige-DX AI diagnostic software prioritizes the cases for review.

## Initial Read



## AI Review

- BI-RADS 1,2



## Additional Review

- Exams selected for further review are sent for a consult

*Selected Exams*







# AI Scalability/Growth Challenges

- Resource allocations key
- Shortage of skilled personnel & processing capabilities
- Lack of expertise in machine learning

Question:

What are the challenges in incorporating AI so it's scalable for growth, and sustainable for the long haul?





# AI Economic and Equity Impact

- Immediate cost savings can be elusive
- Payers aren't reimbursing for AI service add-ons
- Individuals can pay more out of pocket; ethical issues

Question:

What are the regulatory and economic impacts to look out for?





# AI Pitfalls

- Wrong outcomes and “hallucinations”
- Weak data
- Poor implementation leading to expensive fixes

Question:

How important is the quality of data in this equation?



# AI Implementation Goals

- Improved Efficiencies
- More face-time with patients
- Expediated revenue cycle

Question:

What does the future look like for us if AI is adopted successfully?





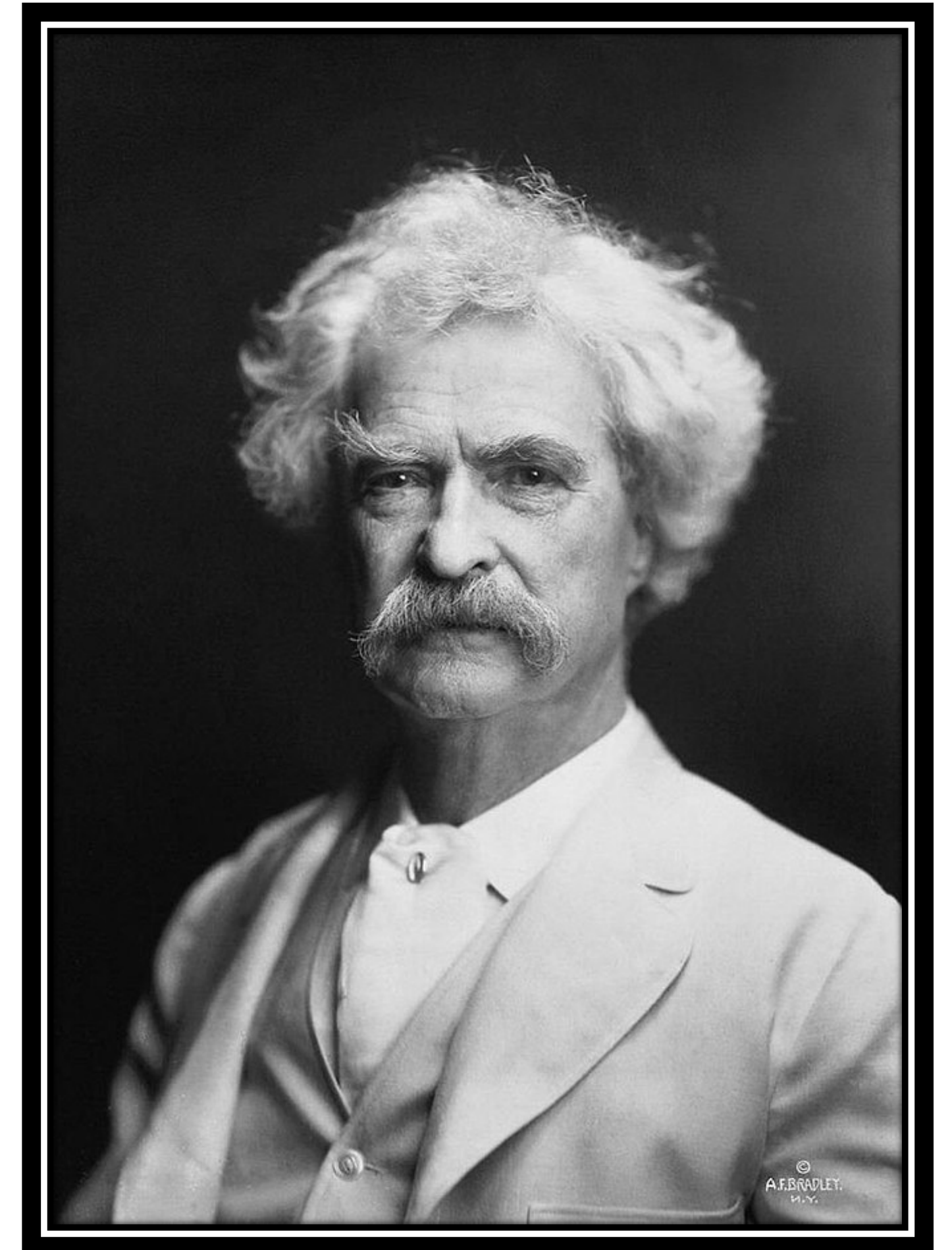
# AI Success Summary

For a successful implementation of AI tools:

1. Your data foundation must be rock-solid
2. Clean, scalable data is vital
3. Start with a solid integration and dataflow
4. Experience in automation and data is key
5. Partner with experts who understand your company's space, data and functions

**“Data is like garbage.  
You’d better know what you  
are going to do with it before  
you collect it.”**

**- Mark Twain**



# Thank you

## **Greg Sorensen, M.D.**

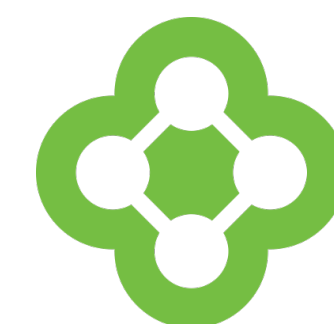
CEO, Co-Founder of DeepHealth, Inc.  
greg.sorensen@deephealth.com

## **Andy Moye, Ph.D.**

CEO of Paige AI Cancer Diagnostics  
andy.moye@paige.ai

## **Robert Negosian, MBA**

President, CTO of U.S. HealthTek  
robert@ushealthtek.com



**U.S. HealthTek**



(855) 487-4822 | [USHealthtek.com](https://USHealthtek.com) | [@us-healthtek](https://@us-healthtek) 